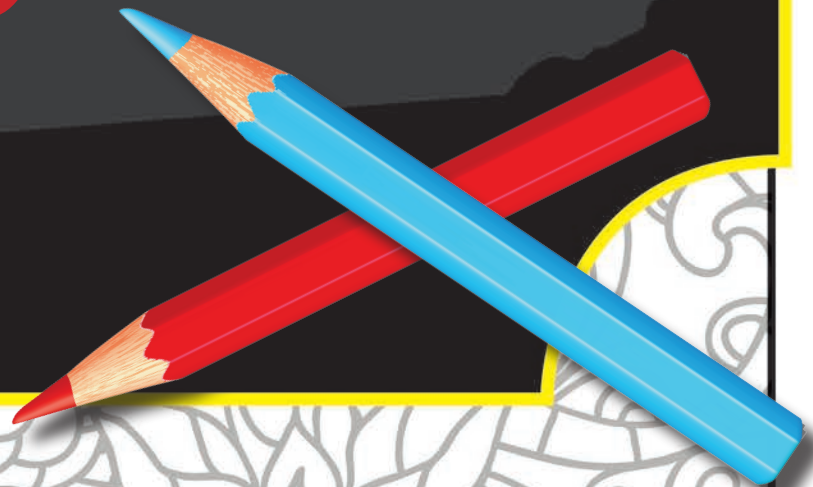
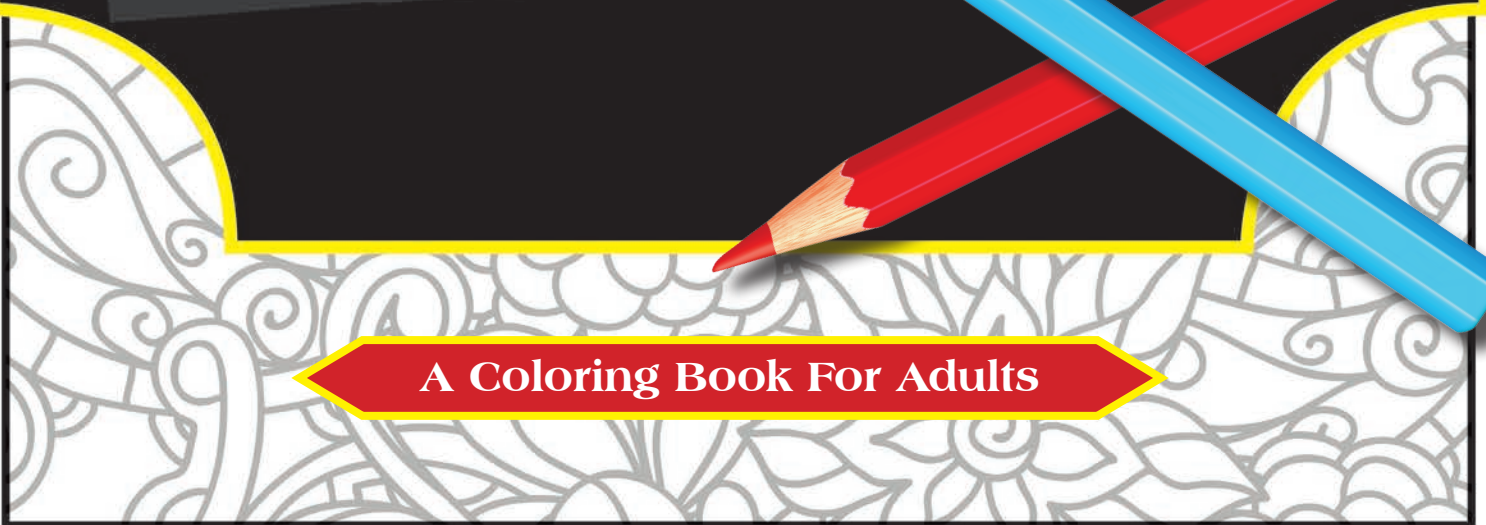


*Color Me  
Pennsylvania*



A Coloring Book For Adults







## *Capitol*

Pennsylvania's Capitol building was designed by Philadelphia architect, Joseph Huston (1866-1940) in the American Renaissance style. Huston's vision was to create a "Palace of Art." Many visitors claim it to be one of the most magnificent capitol buildings in the world. It was registered on the National Registry of Historic Places in 1977, and designated as a National Historic Landmark in 2006. The Capitol is a public building and belongs to the people of the Commonwealth.



## *Agriculture*

Agriculture is the Commonwealth's foremost economic enterprise and its number one industry. As a state, Pennsylvania is a worldwide leader in agriculture, food and lumber production. The Department of Agriculture markets programs that promote agribusiness throughout the world.



*Pocono  
Mountains*

Often referred to as “the Poconos,” the Pocono Mountains region encompasses the Northeastern Pennsylvania counties of Monroe, Carbon, Pike and Wayne. With its many natural assets, the Poconos have become known for their resort areas, recreational offerings and as a premier vacation destination.



*Autumn*

Because of its position on the map (latitude and longitude) as well as its topography, Pennsylvania boasts of a longer and more varied fall foliage season than any other place in the world. The variety of deciduous trees produces autumn leaves ablaze with a myriad of striking color. This makes the Commonwealth a particular destination location in the fall season.



## *Farmers Markets*

Farmers Markets have become a mainstay in the Commonwealth. Fresh produce as well as other seasonal and popular food items are sold at a growing number of convenient locations. The evolution of hydroponic farming has extended the growing season for many farmers in the state.



## *Amish Country*

Although there are Amish communities throughout Pennsylvania, the most popular reference for "Amish Country" is Lancaster County. "Pennsylvania Deutsch" or "Pennsylvania Dutch" is also associated with the region. The word "Deutsch" is derived from the Pennsylvania German language meaning "German" (not Dutch).



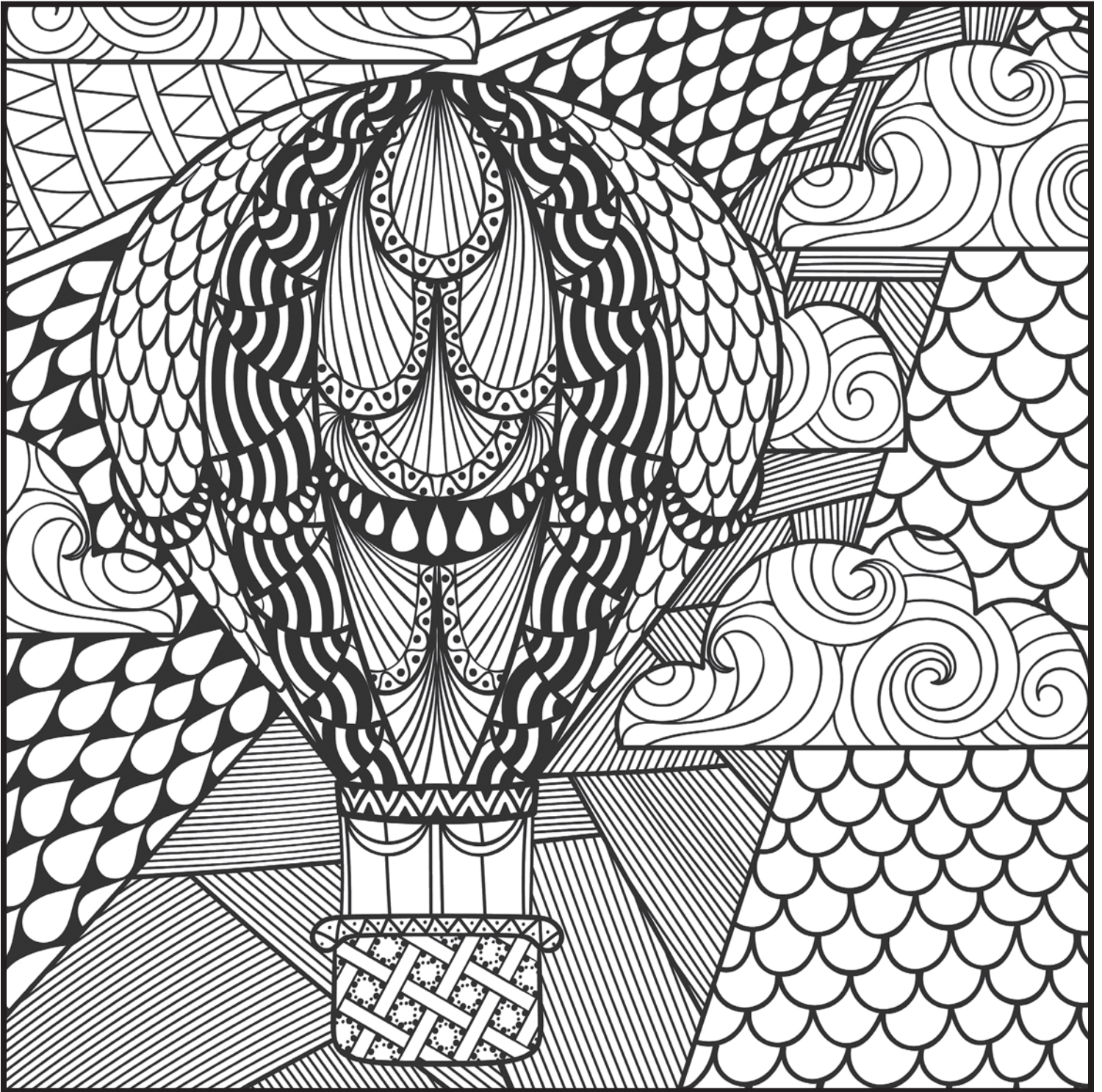
## *Gettysburg Battlefield*

The Battle of Gettysburg is considered by many historians as the turning point of the Civil War. Casualties on both sides were profound. The battlefield was dedicated as a National Cemetery in November, 1863, at which time President Abraham Lincoln delivered his famous speech, The Gettysburg Address. In 1895 it was designated as a national military park, and 1933 it became part of the National Park Service.



## *Owls in Pennsylvania*

Eight species of owls either inhabit or visit our great state. Perhaps the best known (and largest) is the Great-Horned Owl. The rarest is the Snowy Owl which is an occasional winter guest. The Screech Owl is more common as is the Barn Owl. Others include the Short-eared Owl, the Long-eared Owl, the Barred Owl and the Saw-whet Owl which was pictured on Pennsylvania's first Special Fund (Wild Resources Conservation) license plate in February 1999.



### First in North America

Launching from Philadelphia, Jean-Pierre Blanchard is credited with making the first hot air balloon flight in North America in 1793. It took less than an hour to fly from Philadelphia to Gloucester County in New Jersey. President George Washington was present at the launch.

*Hot Air  
Balloons*



## *Wineries*

Pennsylvania's climate and rich soil has made it the fifth largest grape-producer in the country. There are over 200 wineries as well as numerous wine trails throughout the state and the number keeps growing! Family-run tasting rooms and accompanying vineyards have added to the picturesque landscape and have had a positive impact on the state's thriving tourism industry.



## *Longwood Gardens*

Longwood Gardens is a botanical garden located in Kennett Square, Chester County. Often called the world's premier horticultural showplace, the gardens encompass over 1000 acres. Longwood Gardens is open year-round to visitors who enjoy exotic plants, fountains, events and performances, as well as educational lectures, courses and workshops. People come from throughout the world to enjoy the majesty of the gardens.



## *White-tailed Deer*

Enacted by the General Assembly on October 2, 1959, the White-tailed Deer (*Odocoileus virginianus*,) is the official animal of the state. Both Native Americans and settlers relied on the Whitetail to provide food, clothing and tent coverings year round. In 1721 the Pennsylvania House of Representatives is credited for passing the first game laws in the nation to protect the Whitetail.



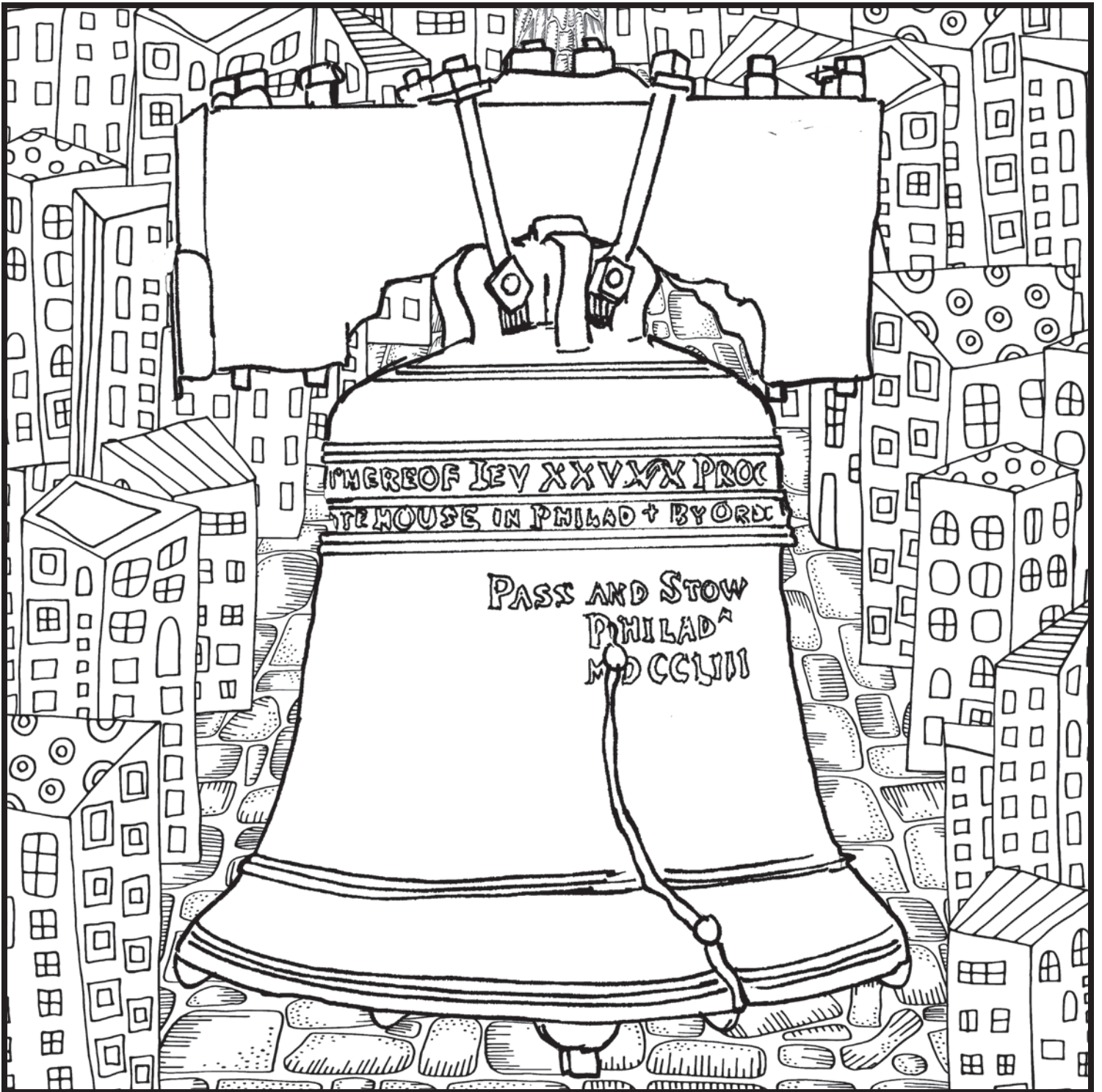
## *Winter & Traditions*

Indiana County is famously considered the Christmas Tree Capital of the World. Although Pennsylvania German settlements had what were referred to as “community trees” as early as 1747, the tradition of a Christmas tree on display was introduced to Pennsylvania by German settlers in the 1830s. Queen Victoria and her husband, Prince Albert (of German heritage) appeared in an 1846 tabloid posed around a Christmas tree. The tradition quickly gained momentum.



## *Vast Woodlands*

Pennsylvania is Latin for “Penn’s Woods” which describes the beautiful, forested landmass that became our Commonwealth. Slowly, over centuries and as our nation grew, land was cleared for agriculture, housing, fuel and, eventually, manufacturing. By the early 1900s, much of the forest had been depleted. As a result of careful management during the last century, forests have been restored into thriving woodlands that continue to benefit its citizenry.



## *Liberty Bell*

Originally referred to as the “State House Bell,” the Liberty Bell first hung in the tower of the Pennsylvania State House (now known as Independence Hall) in Philadelphia. The bell has become a national symbol and bears a lasting message: “Proclaim Liberty Throughout All the Land Unto All the Inhabitants thereof.”

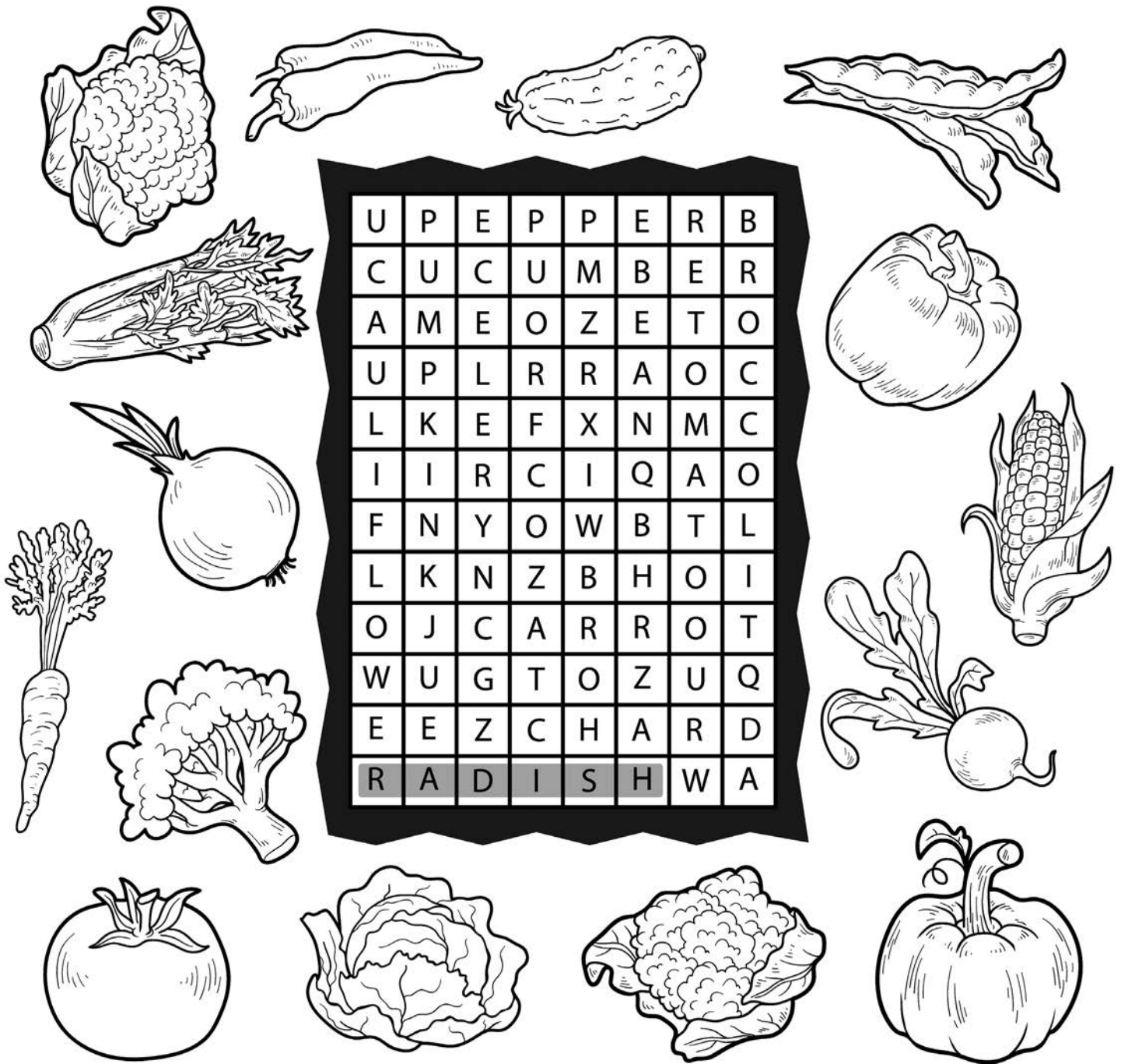


## *Brook Trout*

The Brook Trout is the only trout species considered native to Pennsylvania and, in 1970, it was designated the official fish of the state. To many avid sportsmen, Pennsylvania's abundant and varied waterways are considered home to some of the best trout fishing in the world!



# At the Farmer's Market...



**look for veggies of all colors for best nutrition!**

Pepper

Cucumber

Broccoli

Tomato

Carrot

Radish

Pumpkin

Onion

Corn

Celery

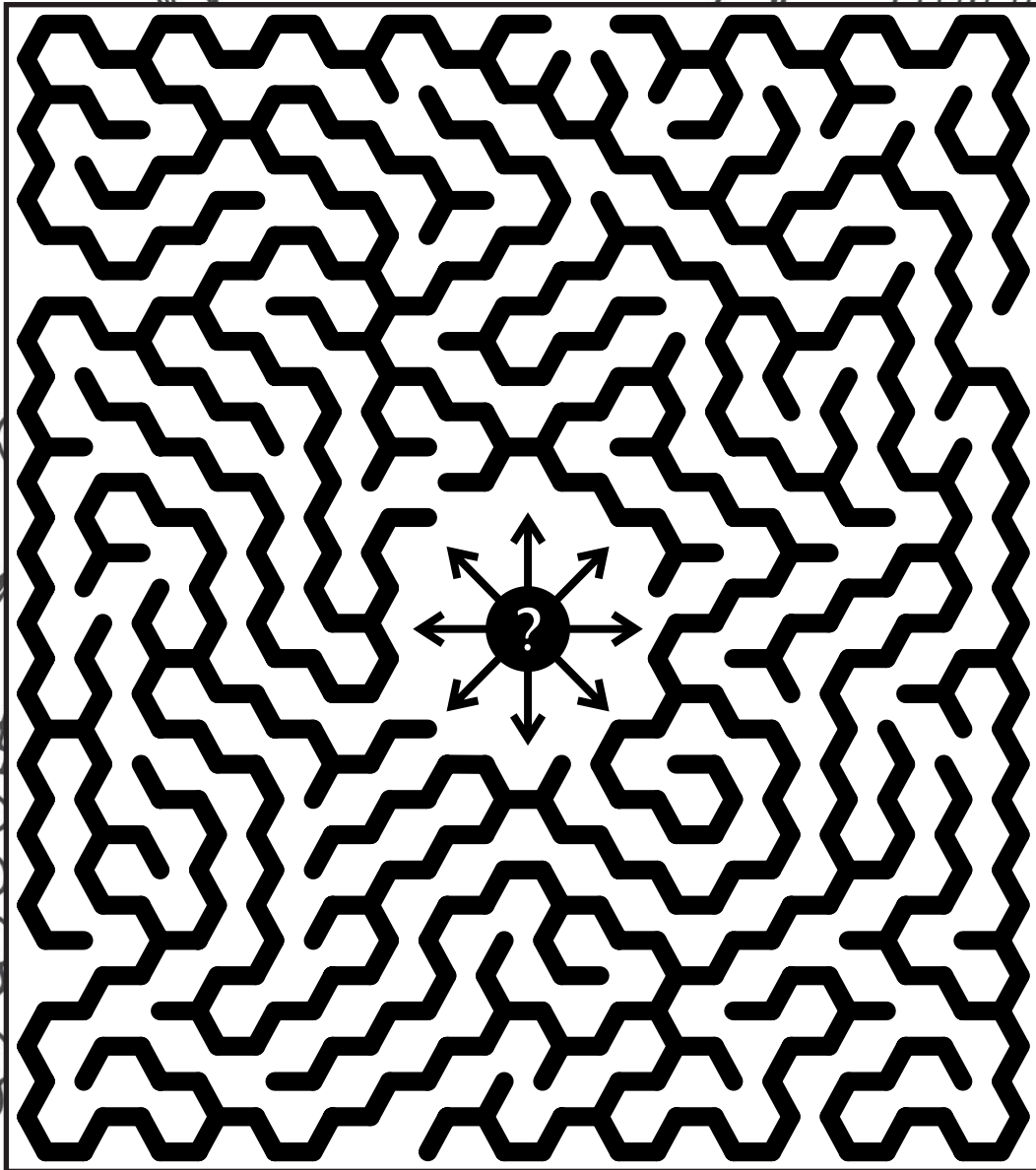
Bean

Cauliflower

Chard

Cabbage

# A-Maze-ing Fun!



*Corn Maze*

Corn mazes are a popular past-time in Pennsylvania. See if you can find your way through this one!

# Autumn in Pennsylvania

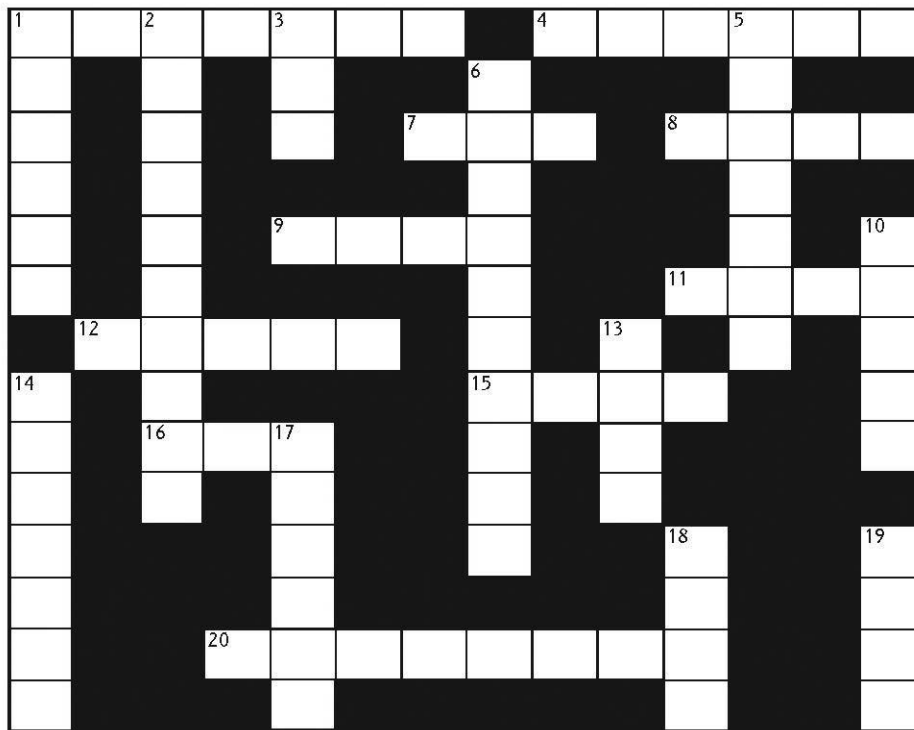


Back to school  
Corn Maze  
Falling Leaves  
Halloween

Harvest  
November  
October  
Puddle

Rain  
Rubber Boots  
Season  
September

# How much do you know about Pennsylvania?



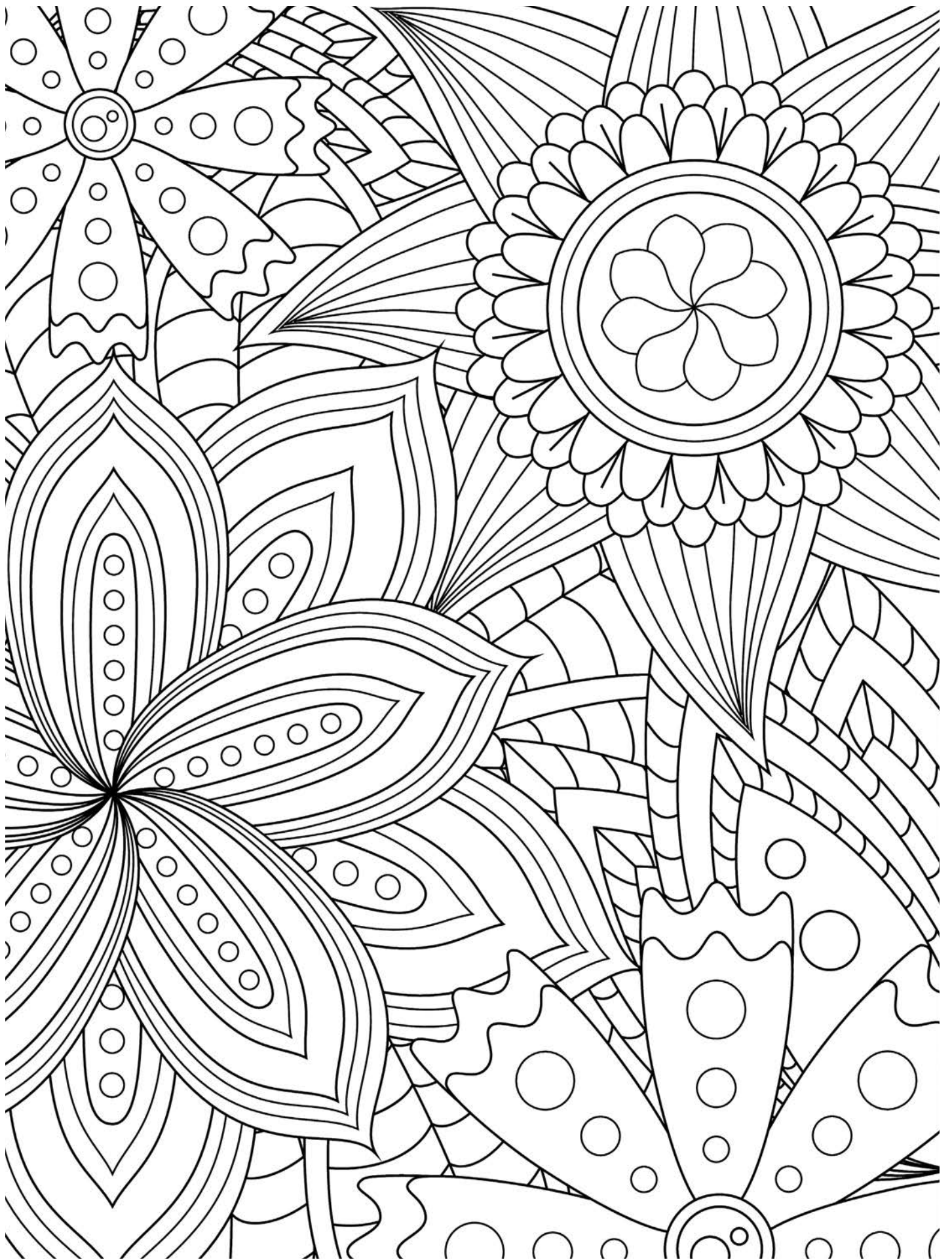
## ACROSS

1. Harrisburg is the \_\_\_\_\_ of PA.
4. The part of the General Assembly that has 50 members
7. When a bill is signed by the Governor, it becomes a \_\_\_\_\_.
8. If the Governor does not approve of a law, he can \_\_\_\_\_ it.
9. The number of years in the term of a state senator
11. The state animal is the white-tailed \_\_\_\_\_.
12. The part of the General Assembly that has 203 members
15. The state ship is the United States \_\_\_\_\_ Niagara.
16. The Great Dane is the state \_\_\_\_\_.
20. Pennsylvania's nickname is the \_\_\_\_\_ State.

## Down

1. Early settlers built log \_\_\_\_\_ from the Hemlock tree.
2. The word Pennsylvania means \_\_\_\_\_.
3. The number of years in the term of a Representative
5. When a bill is changed, it is said to be \_\_\_\_\_.
6. Pennsylvania's capital city
10. The brook \_\_\_\_\_ is the state fish.
13. The state beverage
14. The PA legislative body is called the \_\_\_\_\_ Assembly.
17. One of the leading farm products is \_\_\_\_\_.
18. Hemlock is the state \_\_\_\_\_.
19. The state insect is the \_\_\_\_\_ fly.





# Puzzle Keys

## Crossword

### Across

1. Capitol
4. Senate
7. Law
8. Veto
9. Four
11. Deer
12. House
15. Brig
16. Dog
20. Keystone

### Down

1. Cabins
2. Penns Woods
3. Two
5. Amended
6. Harrisburg
10. Trout
13. Milk
14. General
17. Grapes
18. Tree
19. Fire

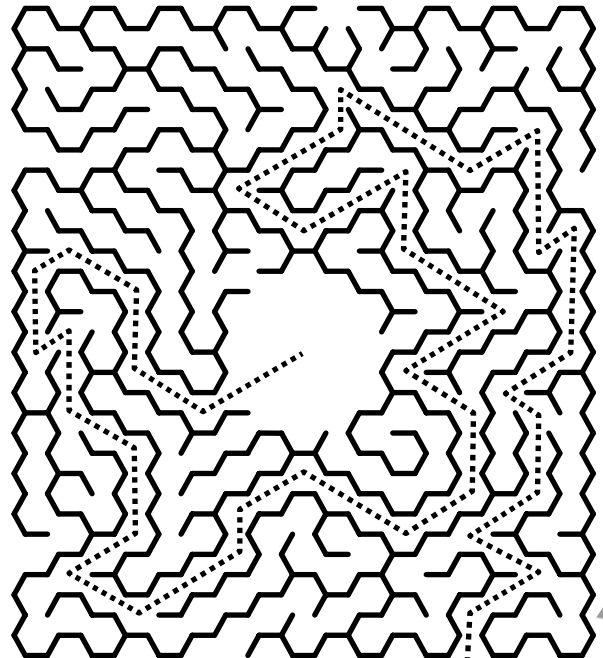
## Autumn in PA

P	U	D	S	R	V	T	O	S	C
E	L	D	E	A	E	K	E	M	H
O	E	R	P	H	S	C	V	B	O
C	B	R	T	R	T	A	O	E	O
T	O	E	E	A	I	B	N	R	L
R	S	B	M	N	N	F	A	L	L
U	E	A	S	O	E	L	G	N	I
B	H	A	L	L	A	V	E	S	C
B	S	T	O	O	W	E	E	N	O
E	R	B	O	E	Z	A	M	N	R

## Farmers Market

U	P	E	P	P	E	R	B
C	U	C	U	M	B	E	R
A	M	E	O	Z	E	T	O
U	P	L	R	R	A	O	C
L	K	E	F	X	N	M	C
I	I	R	C	I	Q	A	O
F	N	Y	O	W	B	T	L
L	K	N	Z	B	H	O	I
O	J	C	A	R	R	O	T
W	U	G	T	O	Z	U	Q
E	E	Z	C	H	A	R	D
R	A	D	I	S	H	W	A

## Corn Maze







NOTICE: This material is for informational purposes only and should not be construed as offering advice or making recommendations of any kind. Neither the Republican Caucus of the Pennsylvania House of Representatives nor any individual member thereof shall be responsible for any errors or omissions in the material contained in this document, or for the effect on such information by any subsequent amendment, passage, adoption, or repeal of regulations or legislation impacting the subject matter herein. Moreover, neither the Republican Caucus of the Pennsylvania House of Representatives nor any individual member thereof shall be responsible for the interpretation of any statutory provisions, administrative actions, or judicial decisions relative thereto. Any user of this document should seek private legal counsel before taking action in reliance upon the material contained herein.